



“The talent is seeing
a possibility where
others do not.”

Enrico Mattei

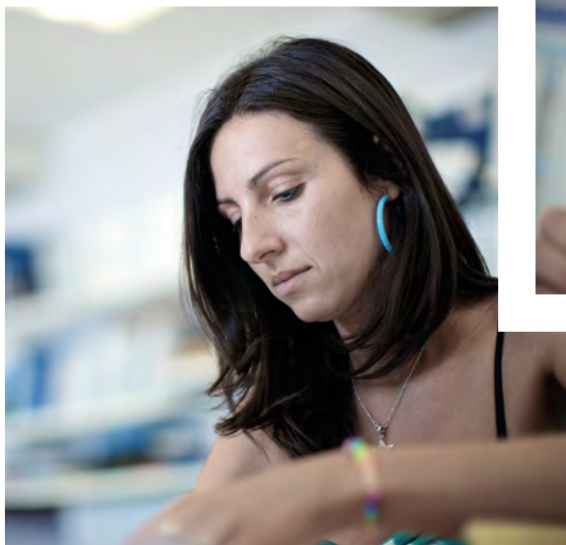
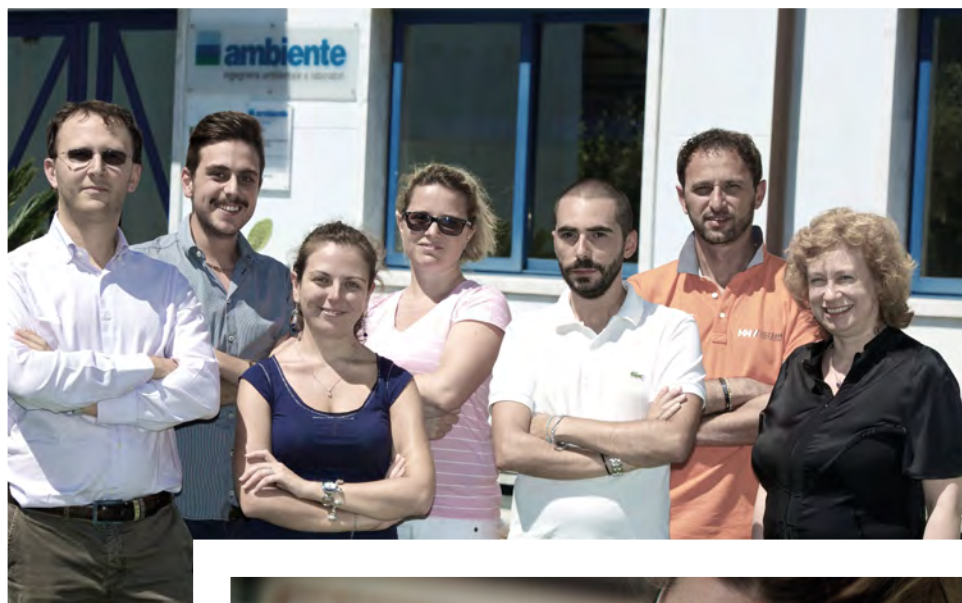
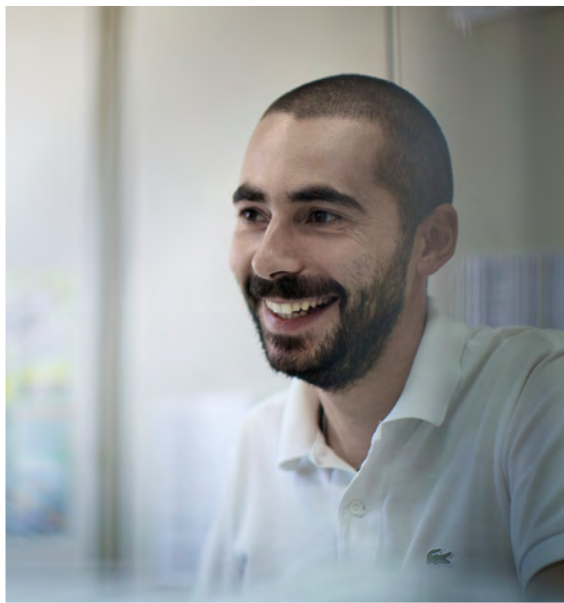
Main offices

CARRARA | FLORENCE | MILAN | ROME |

Other offices

TARANTO, SYRACUSE, GENOA, TRAPANI, REGGIO CALABRIA





About us

THIRTY YEARS OF
ambiente: THE QUALITY
OF EXPERIENCE

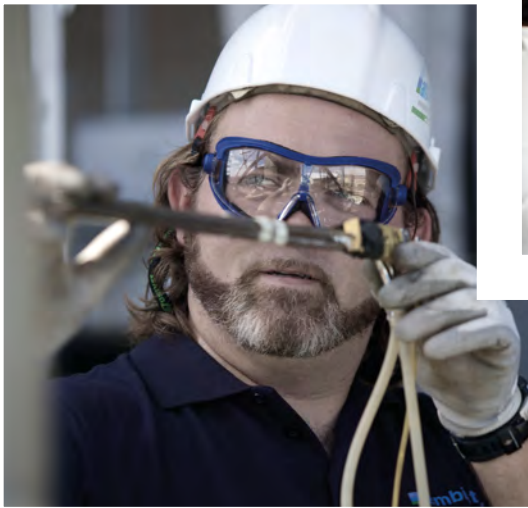
We are an environmental engineering company with in-house laboratories for environmental, chemical and biological tests.

Our story began 30 years ago when the protection of the environment was beginning to be discussed by lawmakers. Our training has taken place in Italy, a country in which the environmental laws have grown rapidly over the years and where the geomorphological features of the area, varied in its shape and densely conform to human requirements, are particularly complex, the daily confrontation with new and newer issues has allowed us to gain a unique experience we make available to enterprises and institutions.

We can count on the work and passion of 150 engineers, experts in engineering, scientific, legal and economic matters.

Our offices are located in various regional areas apt to answer the territorial needs of the entire Country with specific competence.

Thanks to our experience, competence and commitment, we are able to face the growing environmental needs effectively in European and non-European Countries.



Our points of strength

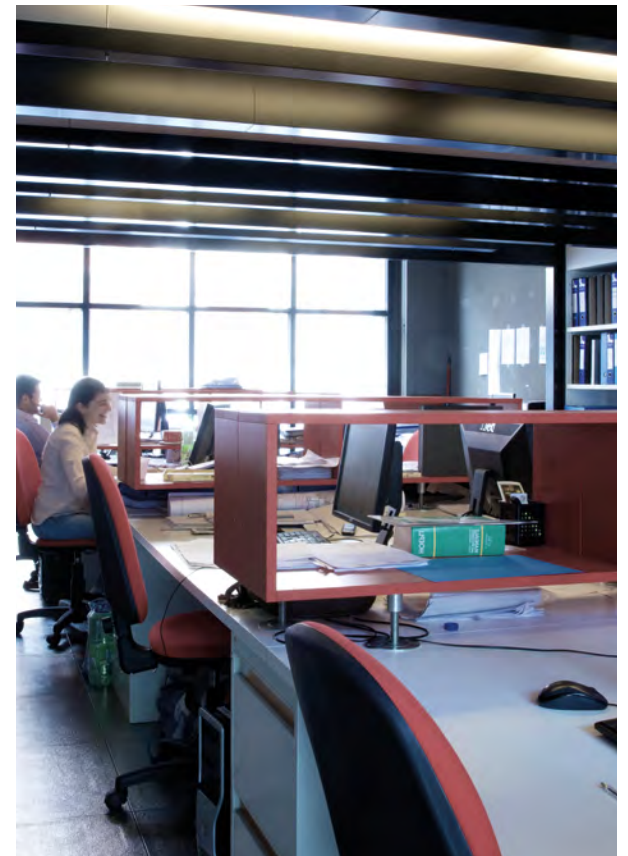
PROJECTS BORN FROM SINGLE NEEDS

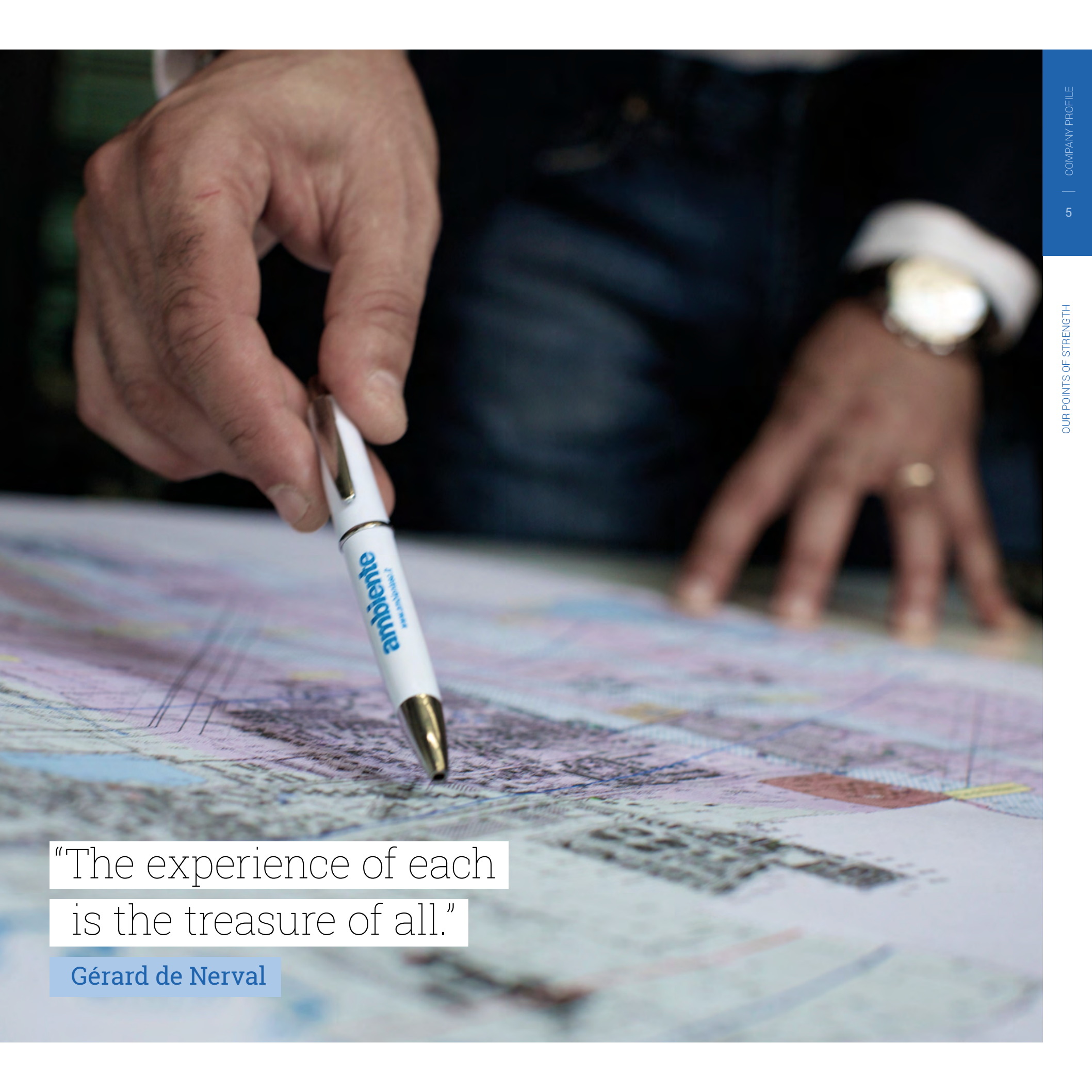
Solid skills, multidisciplinary approach, constant updating and effective communication with the institutions. These are the characteristics that make us the ideal partner for the solution of any issue connected to the environment.

We offer the guarantee of an **integrated planning and synergic planning** between the various themes, in line with reference regulatory requirements and with an eye on the cost-benefit ratio.

Our aim is to identify, thanks to the understanding of specific needs, the best answer for each situation, both in professional and economic sustainability terms.

We can directly manage the relationship with the controlling authorities directly, relieving our clients of this complex task, starting from the study and planning phase and until the activity is fully running.





“The experience of each
is the treasure of all.”

Gérard de Nerval

"Scientists dream of making big things, the engineers make them."

James A. Michener

Our clients

EVERY PROBLEM
HAS ITS ANSWER

We work for private and government organisations.

Our customers include companies in the industrial and energy sector, large enterprises of the oil&gas sector, building and infrastructure companies, reclamation and depollution firms, financial groups.

In the public world, we work for administrative institutions, for utility companies and territorial management institutions.

Internationally, we participate in projects promoted by leading International Financial Institutions (IFI) to support the development, respecting the environment, of EU and non-EU Countries

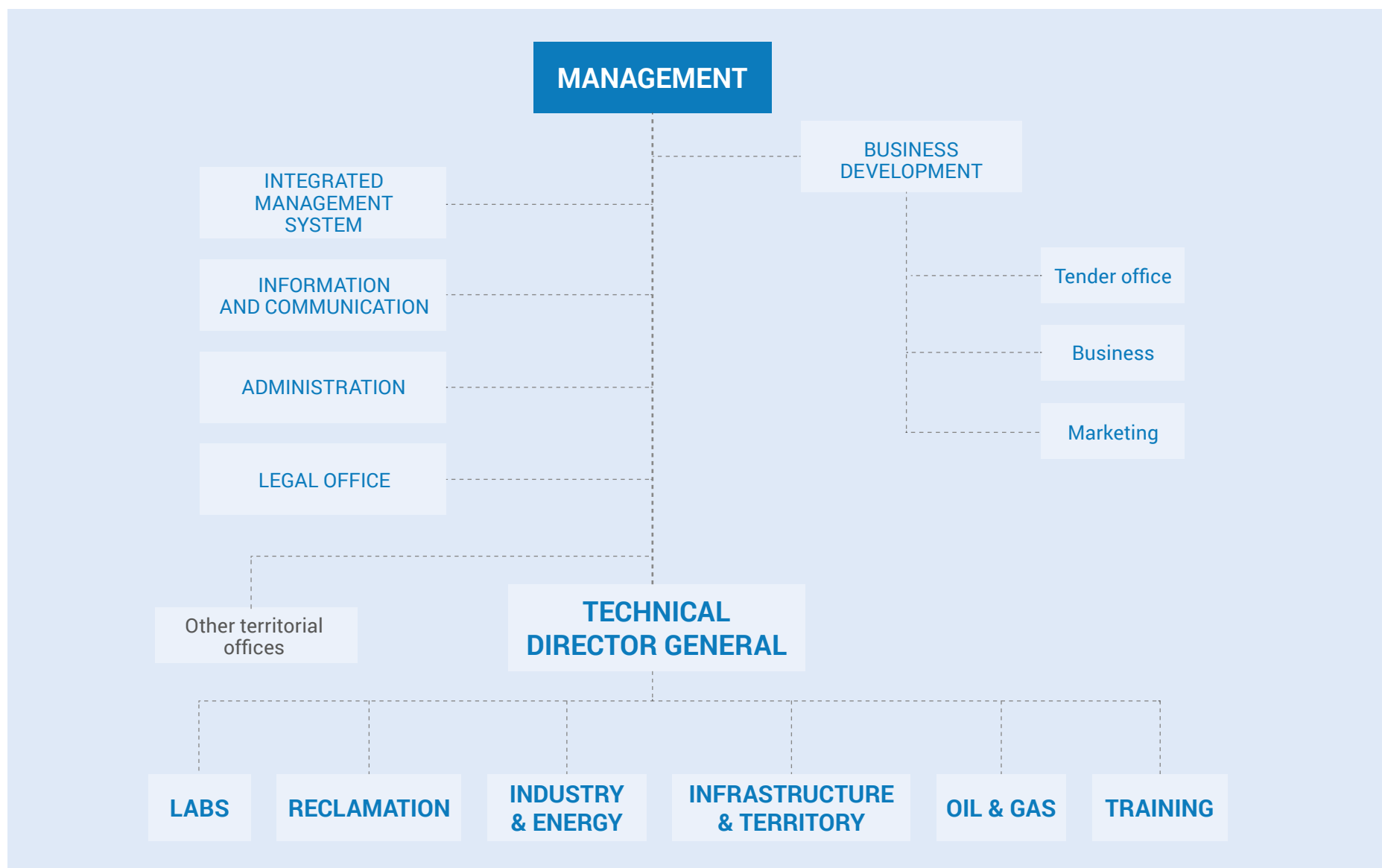
“The client is the most important part of the production cycle”

Edwards William Deming

The Organisation

SOLID ORGANISATIONS, KNOWLEDGE IN MOTION

Our structure is organised into two macro-working areas, engineering and environmental consulting and that of the Laboratory for chemical and biological tests, always in the environmental field.



The Engineering sector deals with environmental permitting and with the assessment of the impacts in the industrial, energy planning areas and the mitigation of impacts, of the management of environmental aspects for the construction of infrastructures and their insertion in the territory, the study and planning of reclamations and the safety of polluted areas and abandoned dumping areas.

The staff consists of engineers, chemists, biologists, geologists and agronomists, but also economists and legal experts, sociologists, doctors and experts in the field of safety and health at the workplace.

The specialist skills of each one are valorised by multidisciplinary skills of the group, fundamental to address each challenge in a competent and experienced way.

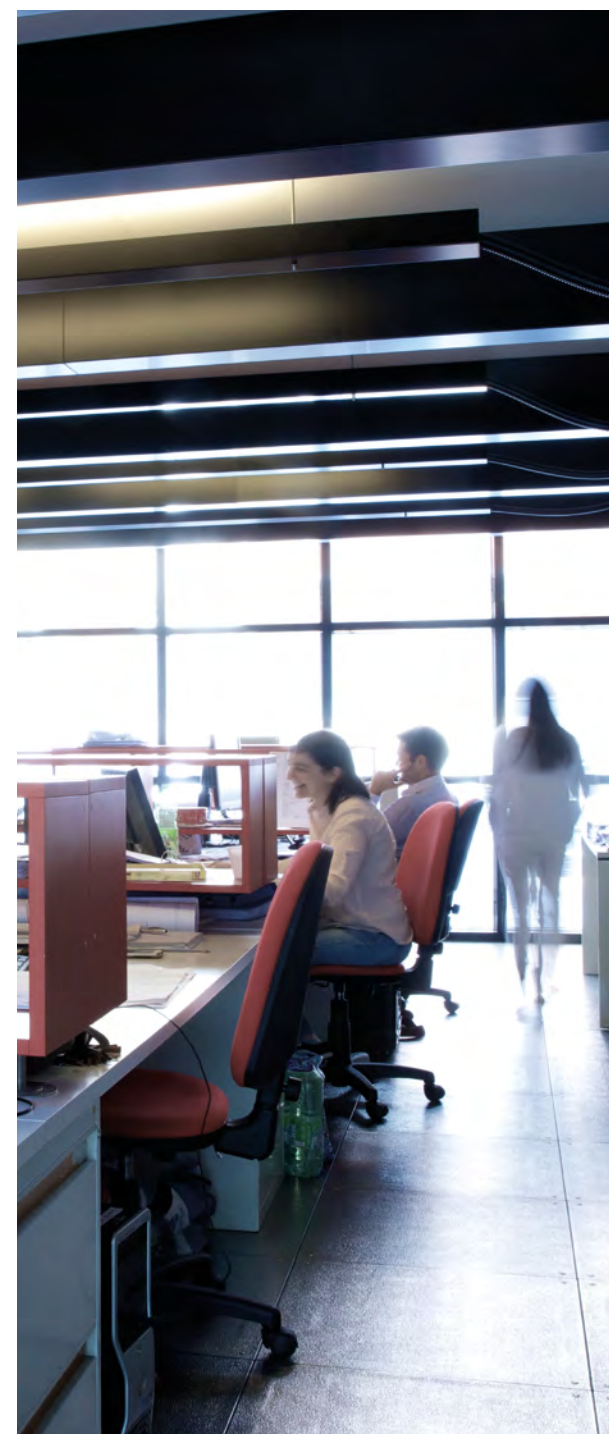
“The amazing discoveries of chemistry strongly express the magic of nature.”

Johann Wolfgang Goethe

The Laboratory sector, as well as providing a constant support to the activities of the engineering area, operates autonomously for chemical and biological tests. For the environmental sector, it performs characterisations of the polluted areas aimed at reclamation projects, the monitoring of water, air, support ground for the construction of major infrastructures, tests for the classification of waste and the characterisation of wastewater for remediation activities and industrial processes, the characterisations of groundwater, surface and marine water for the study and characterisation of the territories.

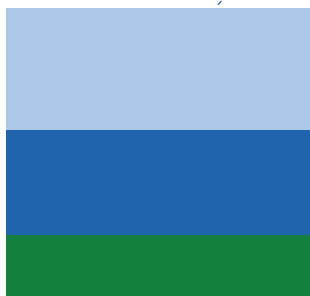
The staff consists of chemists, biologists, naturalists and computer experts. For the food sector, chemical tests, biological and consulting activities for food processing companies.

The result of the activities is a complete service for the analysis and consultancy that allows obtaining the conditions to manage environmental issues in compliance with the regulations, the prevention of impacts and protection of the territory.

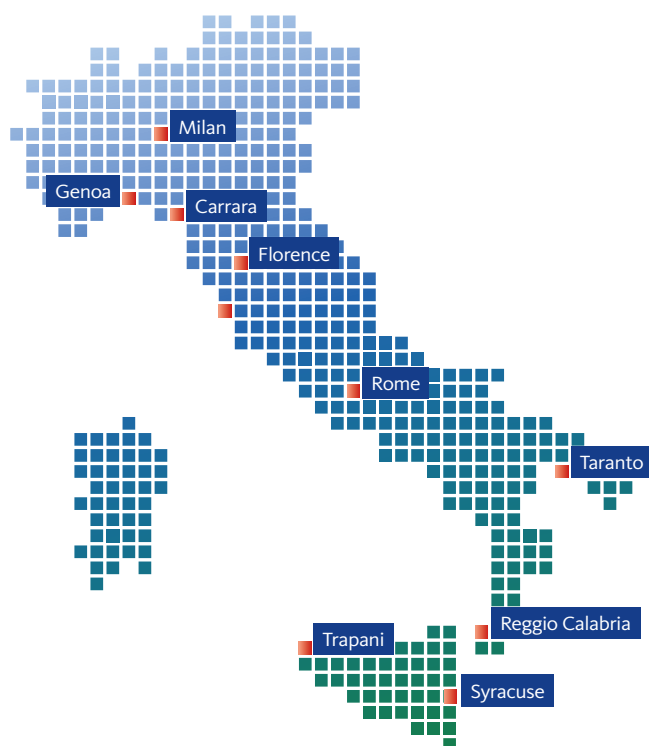
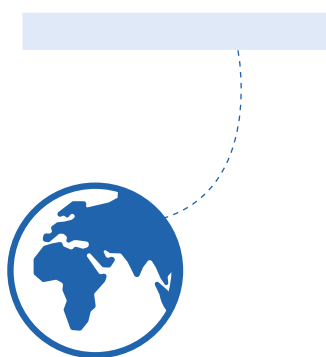


Our offices





MANY ROOTS TO GROW IN THE TERRITORIES



The main office, the heart of the company, is in **Carrara**. This is the guiding and coordinating seat and the advanced operating base for all technical areas.

A modern, comfortable and eco-friendly seat, located inside what was once a chemical industrial site that has been recovered and qualified again, a tangible example of rebirth, diversification and modern valorisation of a glorious industrial history of the Apuan territory.

Besides the offices and test laboratories, these premises also house a large auditorium for conferences, seminars and training courses.

This is the historical base for all production sectors, a point of reference and technical support, which is fundamental for all the other locations, newer and with more recent work areas more limited to the individual territories.

The **Milan** office is especially qualified for the reclamation and recovery of former industrial areas.

It operates within major reclamation and recovery projects of the abandoned industrial areas but also the sector of monitoring of great transport and environmental permitting infrastructures for new businesses are an important axis for work and development.

In **Florence**, there is an active interdisciplinary working group for the safety, professional and sustainable development. This seat has an important working asset in the railway, tram and airport infrastructure sector and is engaged in the entire transport development of the Florentine area.

The seats of **Genoa** and **Reggio Calabria** are also aimed in particular at the infrastructure sector and the related territorial transport networks.


A group specialised in the environmental management of sites with particular reference to issues related to the management of excavation earth and rock, has found a reason for the training and development in the Genoa area and now

brings experience and expertise to colleagues of the building sites in the other Apennine territories.

Rome is the strategic site for the development of consultancy and planning for the Oil & Gas sector, main sectors for the seats of **Syracuse** and **Trapani**, geographically close to the heart of the extraction of Italian Oil&Gas.

The seat of **Taranto**, involved in the project for the southern regions, is also the natural bridge for the activities set up in the Balcan area recently.

Thanks to the location of the seats throughout the national territory, our technicians, although placed in different premises, share knowledge and experience giving life to a virtuous circle for mutual exchange, investigation and professional growth.



"A city is not gauged by
its length and width, but
by the broadness of its vision
and the height of its dreams."

Herb Caen

What we do

NEW ROADS TOWARDS SUSTAINABILITY



We are the efficacious partners for any activity in which an environmental-type operating intervention is required.

For the installation and start-up of **industrial plants**, we manage all aspects relating to environmental issues, both within the planning and the implementation of the works, to find eco-friendly and mitigation solutions for environmental impact.

After starting up the plant, we provide all the consulting and assistance services for the management of the environmental aspects and occupational safety. Concerning the **energy**, we develop innovative solutions for the generating and distribution of energy flows, with an eye on energy saving, alternative energy and their sustainability on the territory.

To the companies in the **oil&gas** sector we offer consulting services for the characterisation and monitoring of polluted areas, environmental permitting, planning of safety measures and of reclamation and restoration interventions. We guarantee, upon request, assistance for the management of emergencies and for impact events in plants and transfer networks.



As part of the **transport infrastructures**, (roads, motorways, railways, trams, subways) we accompany the planning and implementation with territorial pre-survey, study and assessment activities for the potential impacts, mitigation and monitoring planning during and after the works. We manage all the issues pertinent to the environmental planning of the building site and during the realisation of the works, we make available an environmental Head for the site accompanied, if requested, by an environmental office dealing with the site's waste management and excavation land/rocks and with the safety at work.

For the recovery and reuse of **urban areas or former industrial areas**, we deal with the characterisation of the areas, risk analysis, planning and management of groundwater treatment systems, interventions for the safety, reclamation and requalification of the areas.

In the **food sector**, we offer all the consulting services for environmental issues and for safety and we also deal with the quality of the production process and of the products through specialised consulting activity and laboratory tests.

"Our biggest challenge in this new century is to take an idea that seems abstract - sustainable development."

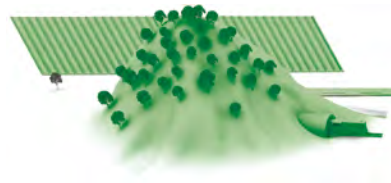
Kofi Annan





Work by Marino Collecchia

Area of intervention: activities and services



Territory

18



Industry and energy

20



Infrastructures

24



Polluted areas

30



Laboratories

34

Territory

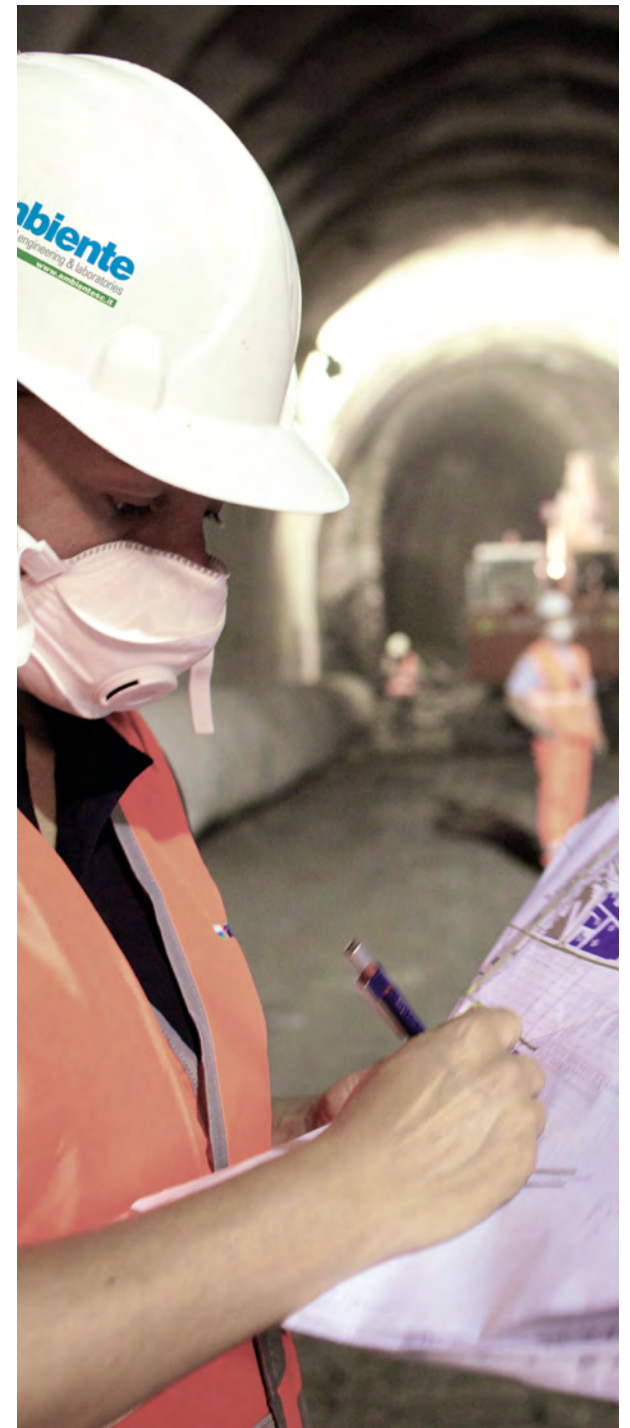
KNOWLEDGE AND AWARENESS OF THE TERRITORY'S CONDITIONS

We conceive the territory as a place of coexistence and balance between citizens, businesses, infrastructures and natural environment.

To achieve this, it is necessary to study and analyse all the different aspects of the territory on which we operate in order to understand all the possible implications of the interaction of the different environmental pressures.

Knowing the natural and man-made features of a territory, being aware of its characteristics of quality and health, is a fundamental condition for the planning of all the economic and public service activities and for those necessary for the development of the civil community.

Only starting from the knowledge and awareness of the conditions of one's territory, new rules and new legislations can be established which are essential for the programming and planning of the objectives for the environmental sustainability required by the territory.





Environmental planning

- **Strategic Environmental Assessment** for plans and programs, as provided by the Second Part of the Law Decree 152/2006 and following amendments (Environmental Code) and of the new regional regulations.
- Studies for the **Incidence Assessment** for plans and programs that involve the environmental protection of EC sites of interest (SIC, ZPS), pursuant to the Presidential Decree 357/97, of the Second Part of the Law Decree 152/06 and relative regional norm.
- Studies aimed at obtaining the **landscape authorisation**, pursuant to Law Decree 42/04 "Code for cultural heritage and landscape".
- Studies aimed at **drawing up the cognitive framework of the Structural Plans and Territorial Coordination Plan of the Provinces** (socio-economic, territorial, naturalistic, legal investigations).
- **Energy planning, Acoustic Zoning and Acoustic Recovery Plans.**
- **Municipal Plans for the management and organisation of the Tele-radio-communications.**
- **Feasibility studies** and the planning on the issues of waste and reclamation, waters, atmospheric and electromagnetic pollution and the development of renewable energy sources.



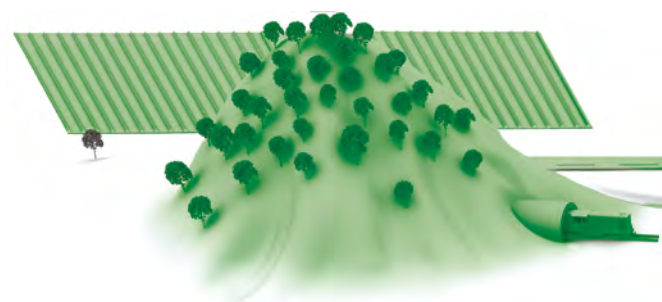
Environmental impacts

- Pre-feasibility studies
- Environmental Impact studies
- Environmental feasibility studies
- Landscape studies and relations
- Declarations of non-subjection to the Environmental Impact procedures
- Studies on effects



Environmental physics

- **Forecast assessments for acoustic and vibration impact** for the realisation, modification or empowering of great infrastructures and industrial plants.
- **Assessment of the acoustic and vibration climate for new settlements**, public and private residences, under planning or existing (schools, hospitals and so on...), close to the area of in which new infrastructures and industrial plants shall be realised.
- **Assessment of the acoustic and vibration impact** for the assessment of the enforced law for existing infrastructures.



Industry and energy

We deal with all the aspects connected to the **environmental impact and the insertion of production facilities on the territory** (chemical, oil, mining, and so on) and production areas (APEA).

We are able to intervene by sector, with specialist expertise for the individual aspects, and ensuring the coordination and development of integrated projects (industrial, infrastructures, urban planning, territorial).

Our proposals, based on the analysis of **technical and economic feasibility**, can include the coordination of the various aspects of planning as well as the development of the authorisation process, integrating the **study and evaluation of all aspects specific to the environment** and occupational safety and the territory.

We coordinate and realise safety plans for **plants with risk of major accidents**.

We develop for the **energy sector**, solutions for the generating and distribution of energy, for the industrial production and the operating of technological facilities with consolidated and innovative sustainable systems.



Planning

- Studies on the technical-economic feasibility based on the Best Available Techniques
- Environmental Due Diligence
- Environmental Planning
- Fire prevention planning
- Studies on incidence and landscaping
- Studies on scoping, verification of EIA and Environmental Impact Assessment
- Dispersion Model
- Forecast assessments of acoustic impacts
- Risk analysis for the companies with Major Accident Risk
- Integrated Environmental Authorisation
- Environmental Permit
- Water Resources Authorisation
- Fire Prevention Certificate
- Notification for New Production Plants
- INAIL reports for plants under pressure and lifting equipment
- Role of Safety Coordinator during the CSP Planning phase
- Permitting



Building

- Assessment of the site emissions
- Assessment of the building site's acoustic impact and possible request for exemptions
- Identification of the environmental mitigation measures
- Environmental coordinating and management for the site
- Waste specialist assistance
- Management of land and rock excavation
- Safety Coordinator role during the CSE Execution phase



Execution

- Assessment of specific risks in workplaces (manual handling of loads, physical agents, fire and explosion, chemical and carcinogenic substances, microbiological elements, asbestos, etc.)
- Support in the management of the requirements included in the environmental permits
- Supervision of the Monitoring and Control Plans
- Development of Emergency Plans
- Coordination on safety and environment for plant modifications
- Implementation and support for Management Systems (Quality, Environment, Safety, Risks of Major Accidents, Energy)
- Implementation of 231 organisational models
- Implementation and support for LDAR protocols
- Implementation of the Monitoring Systems for Continuous Emissions SME
- Development of Monitoring Plans for smells
- Assistance with the Competent Authorities and Control Agencies
- Assumption and support to the service for Head of the Company Prevention and Protection Service
- ADR Consulting
- Emission Trading Consulting
- Technical Consultancy for the Party CTP
- Accredited training on environment and safety (ASR for workers and equipment, staff in first aid and fire prevention, RSPP, ASPP, RLS, etc)



Disposal

- Drawing up of disposal plans
- Communications necessary for the disposal of the plants and equipments
- Identification of residual environmental liabilities







Infrastructures

INSTRUMENTS SUITED FOR LONG-LASTING REALITIES

We are the ideal partners for the realisation of great infrastructures. We deal with the study and analysis of the territory prior to the realising great infrastructures, both for transport (motorways, tunnels, ports, airports) and for public service (landfills, treatment plants, thermal power).

During the planning phase, we take care of all aspects related to the environmental impacts and works for the prevention and mitigation of impacts.

During the construction, we develop the chemical, physical and biological monitoring activities for the site and manage the aspects related to the handling and conferment of the materials resulting from the earth and rock excavations for the purposes of control and containment.

We also deal with all aspects related to safety at the workplace and our site offices are able to manage the environmental aspects and those related to the quality and safety of the construction activities in an integrated and optimised way.

We take care of the evaluation of all environmental impacts for development and requalification projects of new or expanding urban areas, for major transport infrastructures and service facilities such as incinerators, landfills, for which we organise studies on the atmosphere, water, soil, noise, exosphere, landscape and socio-economic environment aspects.



Main activities

Environmental planning

- Environmental Impact Assessment (EIA)
- Environmental project and plans for the construction site
- Environmental Monitoring Planning
- Planning of environmental mitigation works
- Consultancy activities for the development of the environmental issues during tender phase



Environmental monitoring

Monitoring is carried out **pre-construction, during construction and after the construction work**, on these elements:

- atmosphere (dust, gaseous pollutants, heavy metals, hydrocarbons, dioxins, etc.);
- surface water (including the Extended Biotic Index and the Fluvial Functionality Index) and groundwater;
- soil/subsoil;
- noise and vibrations;
- electromagnetic fields;
- radiations, in particular the assessment of exposure to radon;
- ecosystem and biotic elements (vegetation, flora, fauna, phytosociological tests, phytosanitary assessments, underwater surveys, etc.);
- landscape (landscape unit, conditions of the places, photo-insertions, audio-video filming, etc.);
- induced traffic;
- social environment;
- produced waste.
- Arrangement of **Geographic Information Systems** (GIS) for the management, consulting and divulgation of environmental data.



Building site unit

- **The development of ISO 14000 Environmental Management Systems and EMAS and Integrated Management Systems** “Environment - Quality - Safety”.
- The management of the laws and regulations for the timely retrieval of regulatory changes.
- The promotion of the diffusion of environmental culture within the company and the assurance of a suited training for all the staff on the environment issue.
- The maintenance of relationships and contacts with the local authorities.
- **The management of the entire waste line.**
- **The management of the traceability of the excavation earth and rocks** from the works under way in accordance with the contractual documents and enforced law.
- Checking and drawing up of all the documentation required by the Contracting station.
- Arrangement of the contract documents provided by the Environmental Management and Project Safety System: the Manual, **Environmental Emergency Plan**, Procedures and specific operating instructions, OSP, Risk Assessment Reports, verifications of the technical and professional qualifications of the enterprise.
- Drawing up and filling in of the Environmental Control Plans for the environmental aspects deemed important, for all the period of reference and for the WBS and competence of the Enterprise in compliance with the General Contractor specifications.
- **Management of any Environmental Non-compliance issue** during inspections and/or audits and of any faults reported during the processing.
- Preparation of the documentation necessary for environmental permits (air emissions, water exhaust/supply, etc.).





Safety at the workplace

- Assumption of the role of **Head of Prevention and External Protection**
- Technical support to the Prevention and Protection Service
- **Safety Management Systems and Integrated Systems** "Environment - Quality - Safety"
- Risk assessment for exposure to noise
- Risk assessment of exposure to vibrations
- Risk assessment of ionising radiation exposure
- Risk assessment of fire
- Chemical risk assessment
- Assessment of the exposure to explosive atmospheres

Safety at the building sites

- **Coordinator for safety**, as provided by the Title IV of the Law Decree 81/2008.
- The drawing up of **Safety and Coordination Plans** for building sites and the maintenance of buildings, civil infrastructures, industrial facilities and major works.
- The drawing up of **Safety Operating Plans** for companies that carry out activities on the construction site.
- The drawing up of the Technical Report for the building operations.
- **Support** to the enterprise **during the planning phase** for the construction site with particular attention to safety and environmental issues.
- Activation and management of the facility dedicated to the site's safety (safety office).







Polluted areas

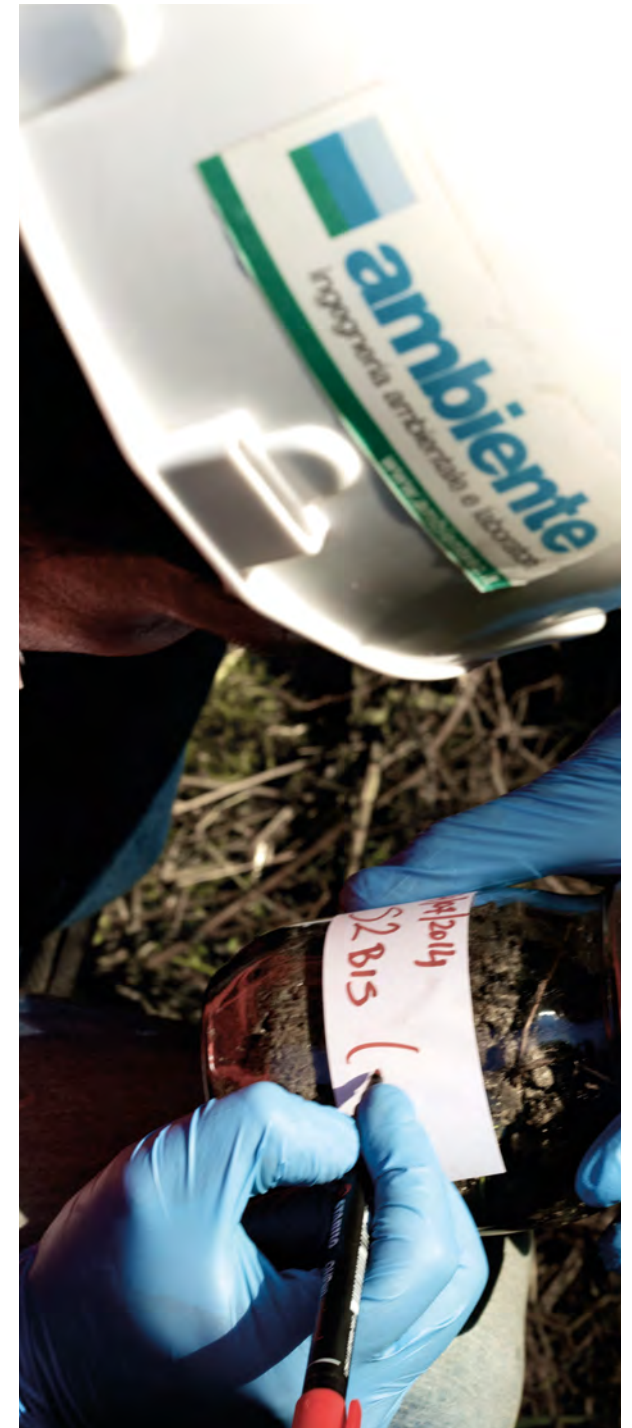
THE RESEARCH FOR A NATURAL BALANCE

We are experts in reclamation activities and in securing polluted sites, even in complex environments: we deal with the defining of the investigation process, the characterisation plan, the on-site investigations, risk analysis and the planning of reclamation and remediation interventions for groundwater and soils.

For each situation, we identify the best solutions and we assist the client in order to obtain the reclamation certification.

We manage the technical reports quickly and independently, using our environmental test laboratories and our mobile equipment.

We are also able to manage the communications with the controlling institutions directly, protecting the interests of the clients and the full sustainability of the interventions.



Main activities

- **Planning of reclamation projects for polluted sites**, on site (AS\SVE, oxidation, land farming, constructed wetlands) and off site
- **Development and execution of characterisation plans for potentially contaminated sites**
- **Analysis of health-environment risk** for the estimate of the reclamation objectives and prevention measures
- **Drawing up of the Land Use Plan and the Land Management Plan**
- Pilot test for reclamation technologies
- **Management of the reclamation interventions** and environmental recovery
- Development of **technologies for bioremediation**
- Land planning for the **management of urban and special waste**
- Hydraulic modelling for the transport of pollutants in groundwater
- **Planning of emergency safety measures**
- **Planning of Permanent Safety Measures**
- Planning of re-establishment and requalification interventions
- Planning, realisation and management of systems for the reclamation of aquifers
- Planning and management of water barriers
- **Decommissioning engineering**
- Studies on hydrology and hydraulic modelling
- Surveys, samplings, tests on river, sea and terrestrial environments
- **Due diligence** of contaminated sites for the estimate of reclamation costs
- **Preliminary surveys**
- **Study of natural background values** and studies for the assessment of familiar statistics•







Laboratories

PRECISION IS
A GUARANTEE
OF SAFETY

We deal with **environmental and food analysis** through our labs, all **certified by Accredia** and entered in the Register of Research Laboratories of the Ministry of Innovation and Research.

Our staff is highly qualified and constantly and continuously updated. Our equipment is innovative thanks to the use of the latest technology.

We can offer, upon request, a continuous service, 24 hours a day and 365 days per year.

We work on **all environmental aspects**: surface water, groundwater, drinking and wastewater; the soil, subsoil and sediments; waste; composts, biological sludge and soil; atmospheric emissions; asbestos; chemical substances.

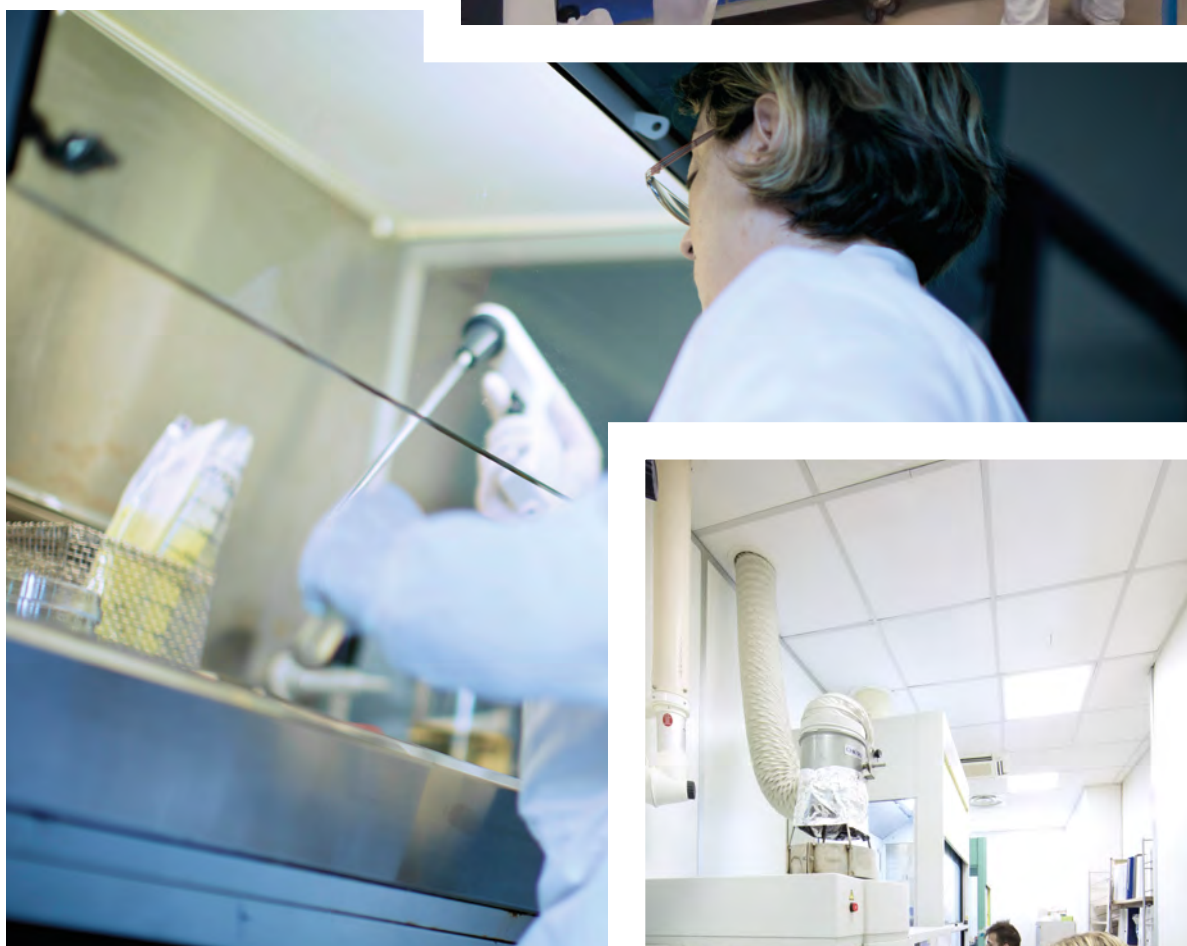
Main activities



- Sampling and analysis of solid waste, liquid waste, leachate
- Classification and identification of the type of most suited disposal and/or recovery procedure
- Toxicity, cytotoxicity and algal toxicity testing for the different elements
- Monitoring and surveys on marine waters and water column
- Sampling and analysis of the soil and subsoil and groundwater
- Sampling and analysis of wastewater
- Control and analysis of wastewater, domestic, industrial and processing water
- Monitoring and characterisation of surface water elements
- Verification of continuous monitoring systems for air emissions in the atmosphere (SME - IAR - QAL 2) with mobile equipment
- Monitoring of the air quality with mobile units
- Analysis of emissions in the atmosphere
- Analysis in the workplace (industrial hygiene)
- PCOM, FT-IR sampling and analysis, with quantitative and qualitative research of the forms of asbestos

- Surveys on physical entities (noise, vibration, lighting, microclimate) performed in workplaces and outdoors
- Ionising radiation and electromagnetic field surveys in the high and low frequency
- Consulting and analysis for the implementation of the REACH





The **agribusiness sector** completes our laboratories: Complete our laboratories section agribusiness: we carry out in this field analytical controls during the production process and during all subsequent phases of the supply chain, up to packaging and preservation. In addition to the analysis, we offer a comprehensive consulting service, both on HACCP and on the production chain certification.

Analytical activities

- Microbiological and chemical analysis
- Analytical determinations aimed at preparing the nutrition label
- Shelf-Life Testing aimed at assessing the expiry date
- Migration tests on materials in contact with food

Consultancy activity

- HACCP manuals, support for regulatory issues
- Support for voluntary certifications: BRC, IFS, ISO 22000, FAMI-QS, GMP
- HACCP Audit, I and II part





Work by Marino Collecchia



Lab N. 0510



www.ambientesc.it